

.:Alberding Ntrip Caster:.

:Ntrip Caster Service:

- ❖ If you prefer not to operate your own Caster server, Alberding GmbH offers you to set up an **Ntrip Caster service** on a dedicated rental computer. Our company has many years of experience in operating Internet servers in secure server farms.

:Additional Alberding Solutions:

- ❖ **Alberding DataConv** converts GNSS raw data streams or log files to standard formats (RTCM 2.x, 3.x, CMR, CMR+, RINEX v.2 and v.3) or one standard format to the other.
- ❖ **Alberding-QC** is a web-based, multi-purpose quality control software designed for DGNSS, RTK and PPP service providers. It integrates:
 - **RTK-Check**, an RTK / network RTK positioning performance monitoring module.
 - **Checkstream**, a dedicated Ntrip Caster server and Ntrip mountpoint availability and data consistency monitoring software with an automatic SMS/email alarming function.
 - **InspectRTCM**, a GNSS binary data decoder and visualisation tool for in depth data analysis.
- ❖ **BKG Ntrip Caster interface**: a web-based graphical user interface for the Ntrip Caster developed by the German Federal Agency for Cartography and Geodesy (BKG).

.:Alberding GmbH:.

Alberding GmbH has more than 20 years of experience in developing and distributing professional GNSS system solutions for precise positioning, GIS and navigation applications.

For infrastructure operators and service providers Alberding GmbH offers GNSS raw data management, processing, monitoring and distribution software modules as well as complete solutions. The Alberding reference station coordinate stability monitoring software is based on Precise Point Positioning technology.

Alberding GmbH produces Alberding A07, a low-cost, L1 GNSS multi-constellation positioning and telemetry system. Alberding A07 outputs raw observation data and together with the central Alberding monitoring software it offers a cost-effective alternative for deformation monitoring of natural or civilian structures.

...: we improve your position :..

Alberding GmbH
Schmiedestraße 2
D-15745 Wildau
Germany

E-Mail: info@alberding.eu
Phone: +49 (0) 3375 52 50 370
Fax: +49 (0) 3375 52 50 377
www: <http://www.alberding.eu>



Alberding

GmbH

Ntrip Caster



GNSS Data Broadcasting via IP

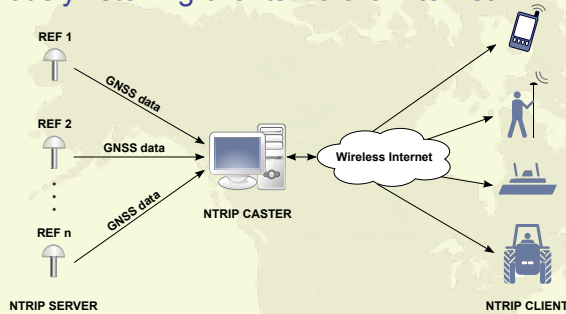
Nearest Station Selection

Map Display of Connected Clients

Web Interface

::Alberding Ntrip Caster::

- Alberding Ntrip Caster is a professional GNSS data broadcasting software that collects real-time data streams from a number of GNSS reference stations and transmits corrections or other derived data products to simultaneously listening clients via the Internet.



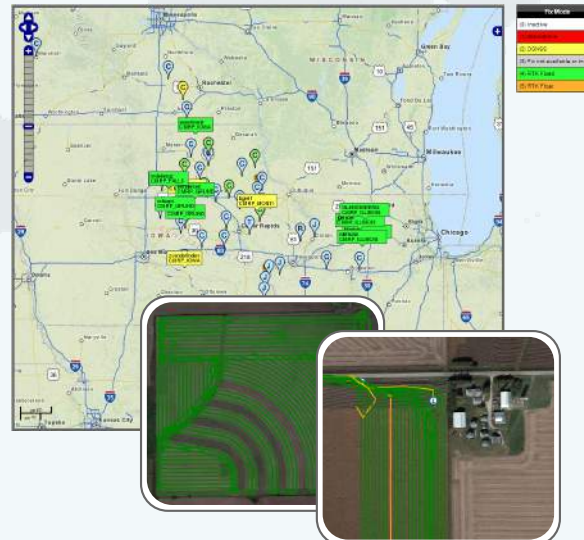
:Basic Features:

- Web-based graphical user interface for easy data stream and user management
- Designed for mass usage
- Supports Ntrip 1.0 and 2.0 protocols
- Supports TCP and UDP connections
- Supports multiple ports and different domain names
- Configurable without connection aborts
- Old configuration can be reloaded
- Available for Linux and Windows OS
- Low system requirements

::Alberding Ntrip Caster::

:Advantages:

- Nearest base option:** the nearest active reference station to the user is automatically selected, based on NMEA GGA position input. An overlap zone can be defined for users working halfway between two stations to avoid frequent switches.
- Map display** of station locations and real-time client positions. Colour-coded user icons indicate RTK fixing status. Additional information (e.g. connection time, number of SVs and data age) can be displayed for each connected client to assist service operators in real-time customer support. **KML tracks** can be downloaded for detailed history data analysis.



::Alberding Ntrip Caster::

:Further Benefits:

- One system - Multiple services:** Alberding Ntrip Caster allows the system administrator to give different levels of access to the web interface. Subadmins can add and manage their own data streams and users. The same Ntrip Caster can be used by a number of station operators to provide independent correction services to their clients. Multiple Ntrip ports and sourcetables can be defined to separate different data types and formats targeted to different user groups.
 - Stream monitoring:** availability of the Ntrip data streams is continuously monitored by the software. A colour-coded table shows the current status of all streams. Detailed availability history of each mountpoint is provided on bar graphs.
- | All | Offline | Online | Warning |
|-----|---------|--------|---------|
| 78 | 6 | 72 | 1 |
- | | | | | | |
|----------------|--------------|----------------|---------------|---------------|------------|
| CMRP_ADAMSBACK | CMRP_ANNAW | CMRP_ARLI | CMRP_ASTOR | CMRP_BLANDIN | CMRP_BROOK |
| CMRP_DJ | CMRP_FALLS | CMRP_FERG | CMRP_FRED | CMRP_GRUND | CMRP_HAV |
| CMRP_JAIN | CMRP_JANH | CMRP_JAWA | CMRP_LBACK | CMRP_ILLINOIS | CMRP_IOWA |
| CMRP_MONTI | CMRP_NEWHALL | CMRP_OWAT | CMRP_OWATBACK | CMRP_PELLA | CMRP_PETER |
| CMR_PARKS | Intuicoms | Intuicoms | Intuicoms | JD_BOST | JD_BUFF |
| RTCM3_ADAMS | RTCM3_ARLI | RTCM3_BROOKLYN | RTCM3_CHARL | RTCM3_CONROY | RTCM3_DEW |
| RTCM3_IOWA | RTCM3_LAPOR | RTCM3_MAR | RTCM3_MONTI | RTCM3_NEWHALL | RTCM3_OWAT |
| RTCM3_ZEARING | SWITCH | TESTBASE1 | TESTBASE2 | TESTBASE3 | TESTBASE4 |
- User connection information can be easily exported in **PDF** or **CSV reports** for billing purposes. All connected clients are listed in a real-time user monitoring table with basic information on the connection sessions.